



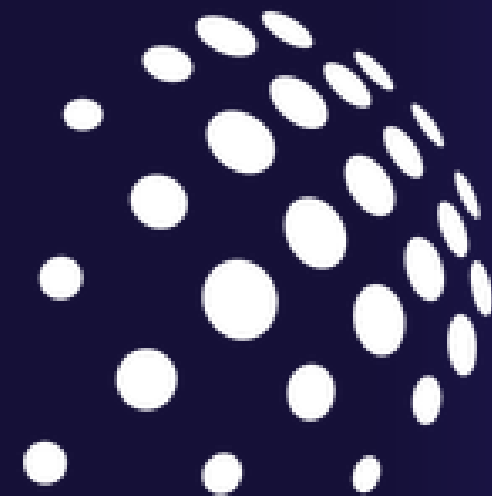
PRESCIENT
DIGITAL MEDIA

WORKPLACE

PLANNING FOR AI IN THE WORKPLACE

AI

TOBY WARD
TOBY@PRESCIENTDIGITAL.COM



PRESCIENT
DIGITAL MEDIA

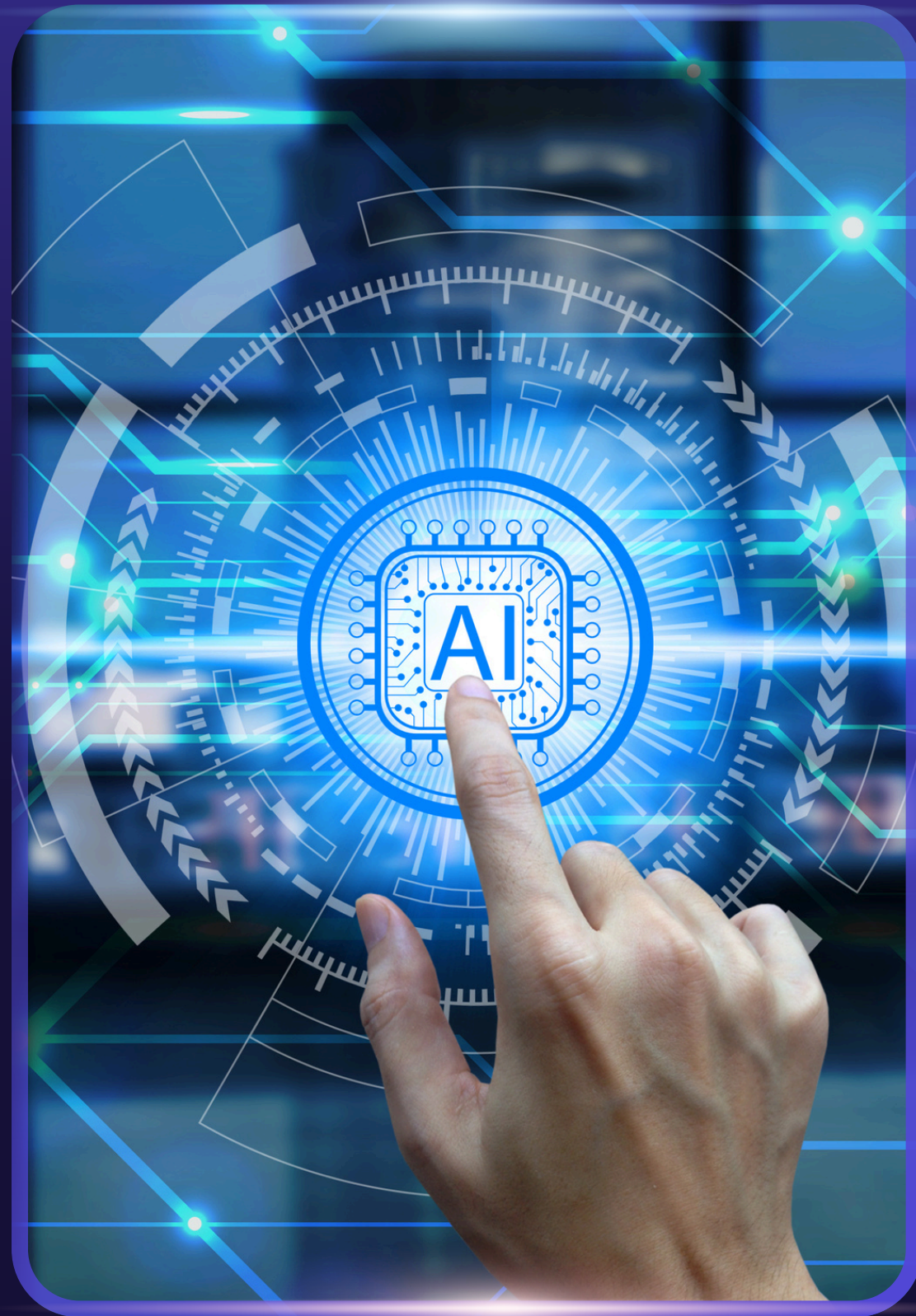
www.PrescientDigital.com

ASSESS, PLAN, DESIGN, IMPLEMENT DIGITAL WORKPLACE TOOLS

DIGITAL WORKPLACE, INTRANETS, AI – FOR 25 YEARS



| | | | | |
|---|---|---|---|---|
|  |  |  |  |  |
|  |  |  |  |  |
|  |  |  |  |  |
|  |  |  |  |  |



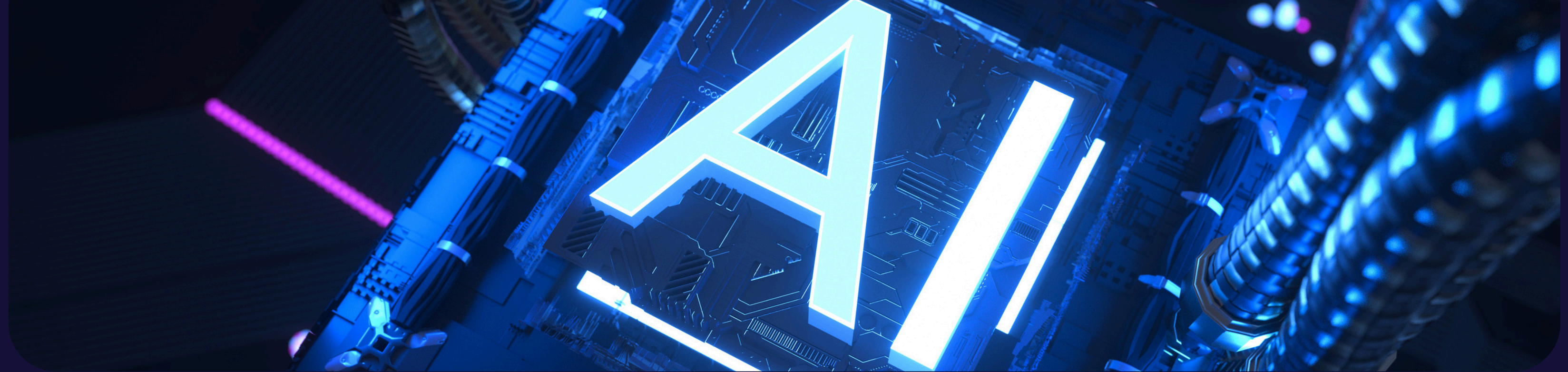
Artificial Intelligence

Artificial Intelligence (AI) is the simulation of human intelligence in machines programmed to think and learn like humans. AI systems are capable of performing tasks such as recognizing patterns, understanding language, and solving complex problems. Machine-learning is but one facet of AI.

➤ **Pattern Recognition**

➤ **Machine Learning**

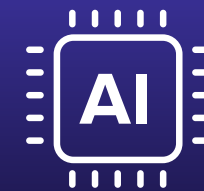
➤ **Problem-Solving**



Types of AI

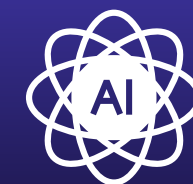
Narrow AI is designed to perform specific tasks, such as facial recognition or language translation. It excels in its designated area but cannot perform tasks outside its scope.

General AI (or AGI), on the other hand, is designed to perform any intellectual task that a human can do, mimicking human-like flexibility and learning capabilities.



Narrow AI

AI specialized for specific tasks or domains.



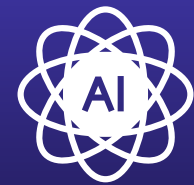
Artificial General Intelligence

AI capable of performing diverse, human-like tasks.



AI

Theoretical



Superintelligent AI

Hypothetical future AI that surpasses human intelligence and capabilities in all aspects

A theoretical form of artificial intelligence that vastly surpasses human intelligence in all domains, including reasoning, creativity, problem-solving, and emotional understanding. Often called Artificial Superintelligence (ASI) would outperform the smartest human minds at virtually every cognitive task, and possess abilities that go far beyond our current understanding.

The Heart of Artificial Intelligence

➤ Machine Learning

A subset of AI where algorithms learn from data to improve performance on specific tasks.

➤ Deep Learning

A specialized Machine Learning technique using multi-layered neural networks to process and model complex data patterns.



AI @ Home

AI is seamlessly integrated into our daily lives, from voice assistants like Alexa and Siri to smart home devices.



Smart Homes

AI-powered devices like thermostats, lights, and security systems.



Personal Assistants

Voice-activated tools assisting with reminders, tasks, and information.



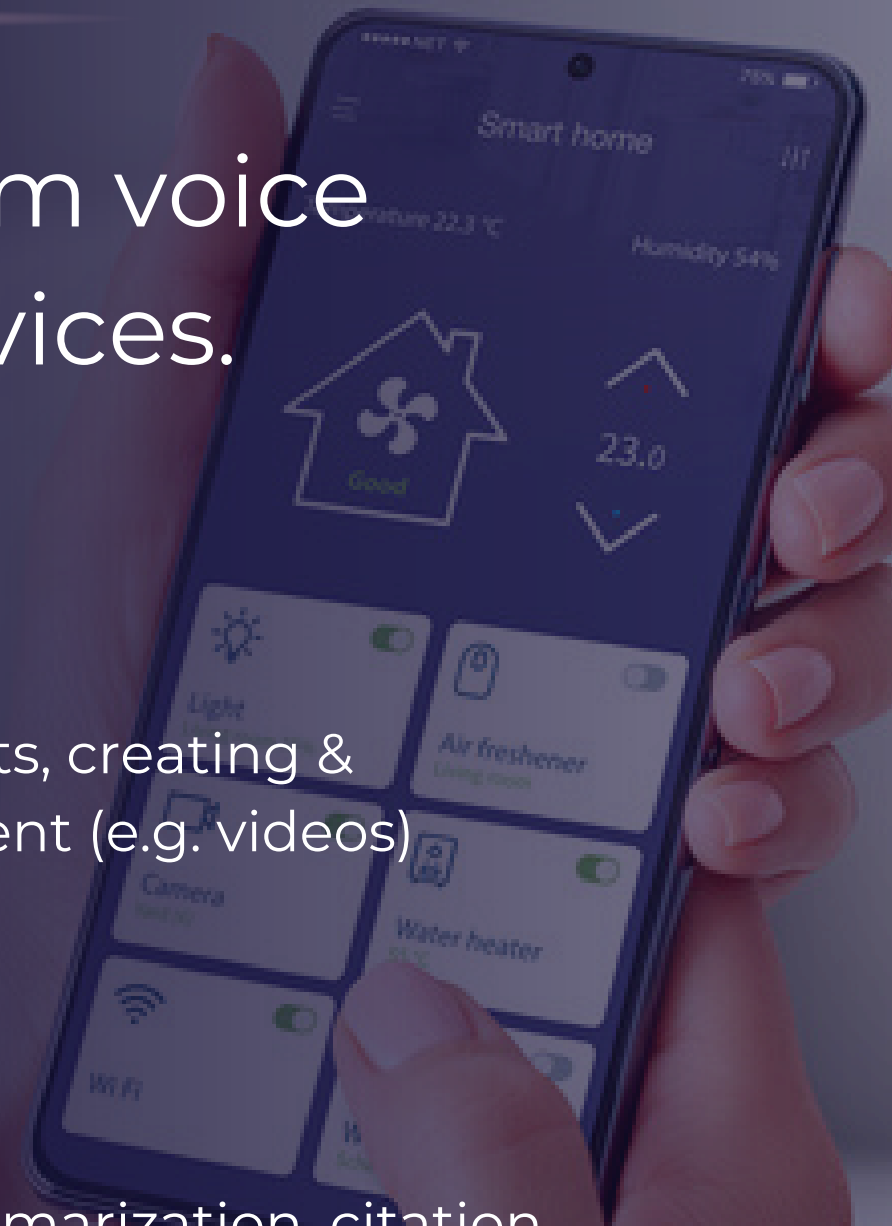
Generative AI

AI apps for agents, creating & enhancing content (e.g. videos)



Research

AI-powered summarization, citation analysis & research automation.



AI in The Workplace

AI automates repetitive tasks, improves customer service with chatbots, and enhances decision-making with data analytics.



Smart Offices

AI-powered machines, bots, office utilities.



Workplace Automation

AI automating repetitive tasks and enhancing decision-making.



Digital Assistants

Chatbots, digital & voice-activated tools assisting with reminders, tasks, and information.



Productivity Tools

AI tools for managing schedules, emails, and communications.

Employee Adoption

40%

Have Used A Few Times In The Past Year

AI Converts

2-3%

Regular Users

Women

20%

Less Likely To Adopt



GEMINI



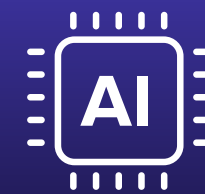
GEMINI





Costly \$\$\$\$\$\$

Enterprise AI software license costs vary widely, ranging from per-user monthly fees of \$30-\$60 for off-the-shelf productivity tools to custom solutions costing \$100,000 to over \$1 million for development and deployment, with ongoing monthly platform fees of \$1,000 to \$100,000+



\$30–60 per user per month

AI specialized for specific tasks or domains.

DO NOT BE SOLD A TECHNOLOGY
SELECT A TECHNOLOGY

ASSESS, PLAN, EVALUATE, IMPLEMENT

Abstract wavy lines in a light blue color, flowing from the bottom right towards the center of the slide.

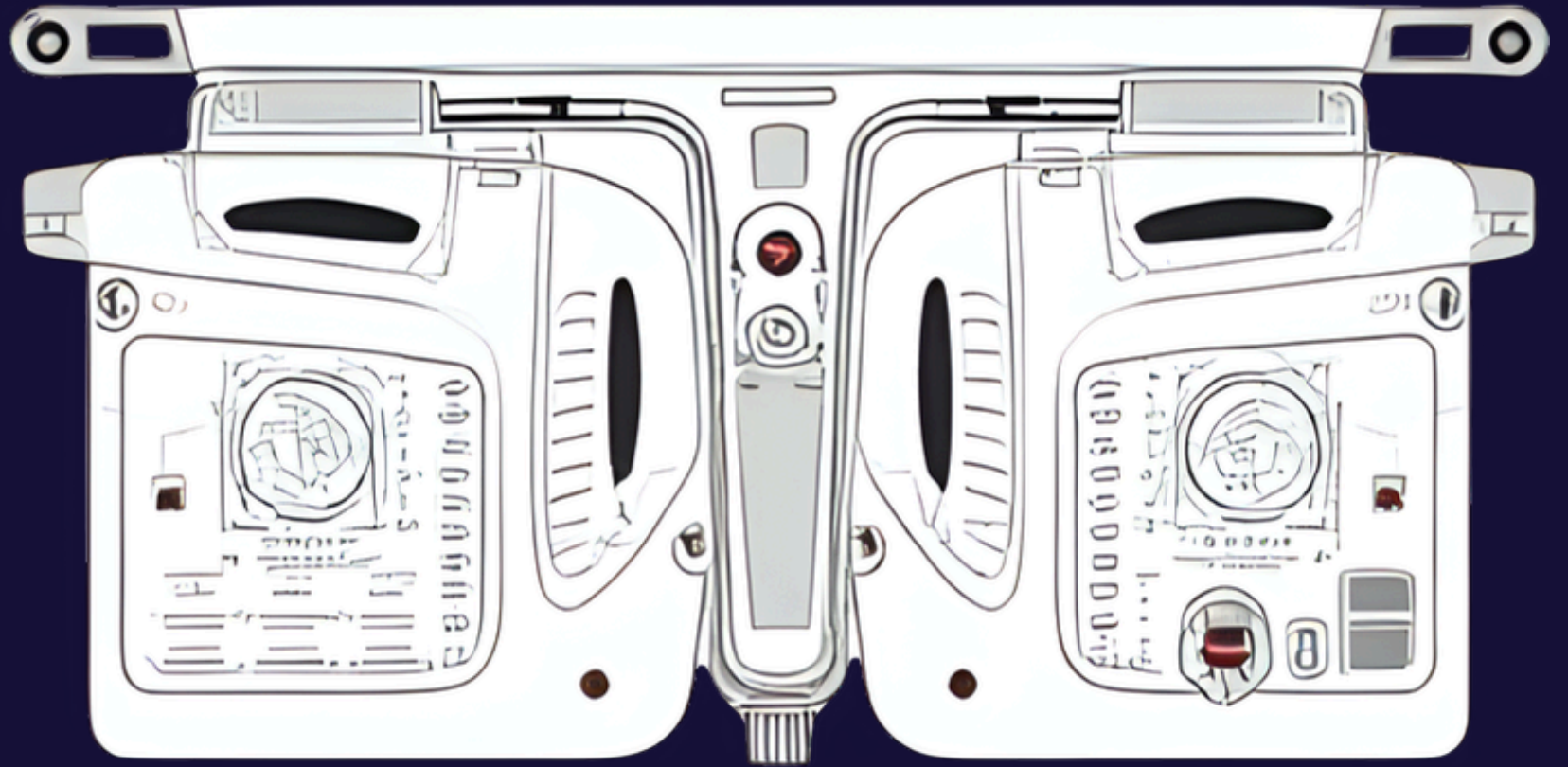
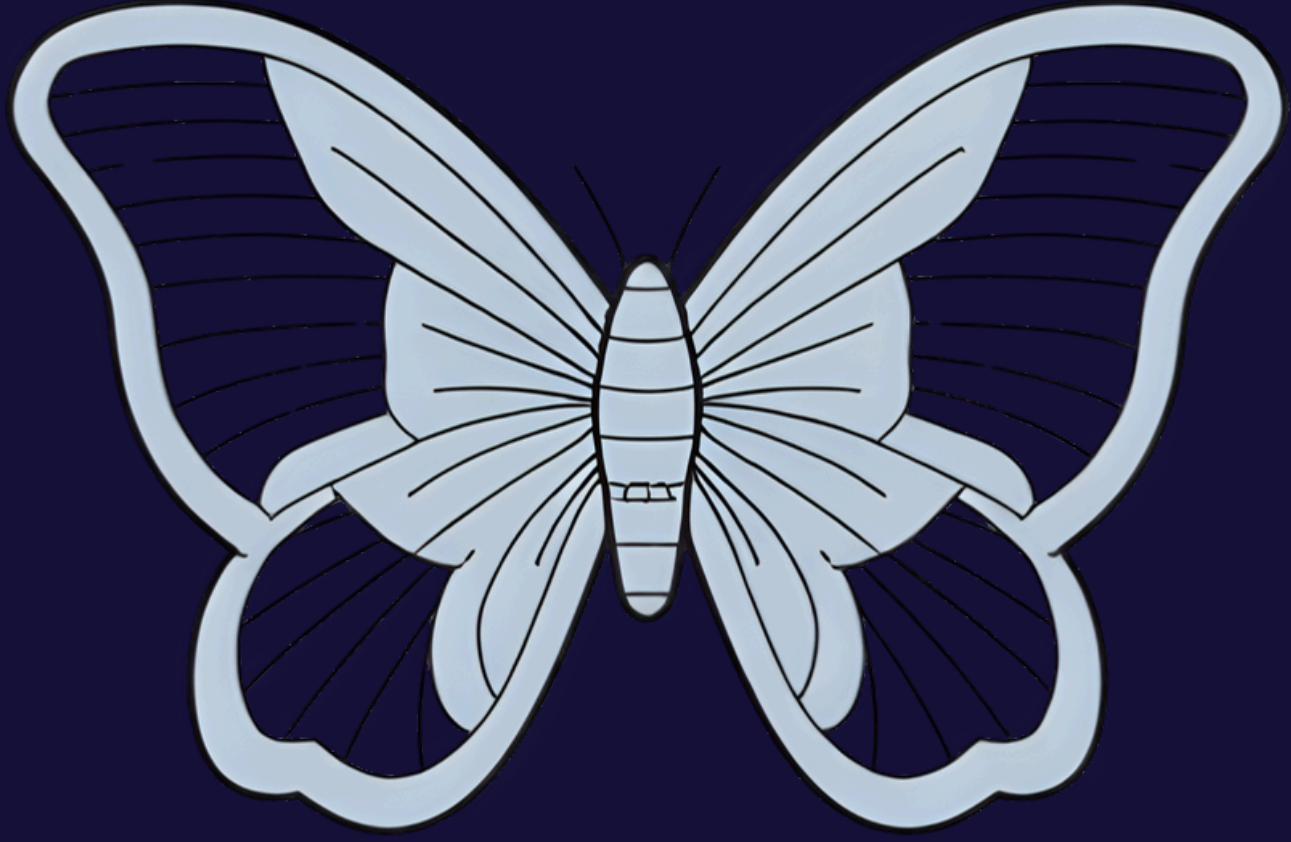
A creature with a brain-like head and tentacles is running on a reflective surface. The background is a cosmic scene with a blue and purple gradient, filled with red and orange sparks or particles. A purple rectangular box contains the text.

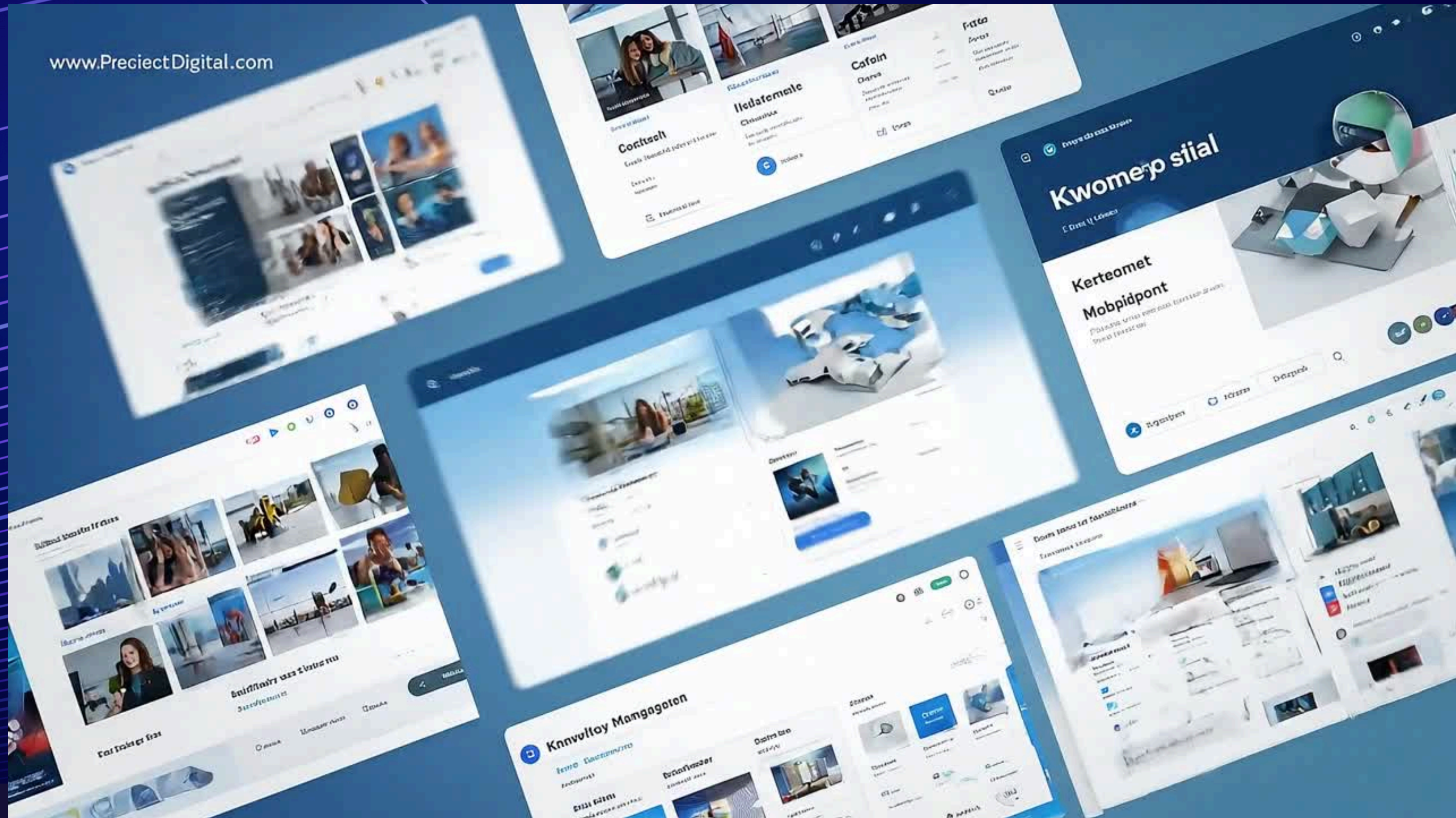
AI HALUCINATIONS

**WHEN A LARGE LANGUAGE MODEL (LLM)
GENERATES FALSE OR MISLEADING INFORMATION**



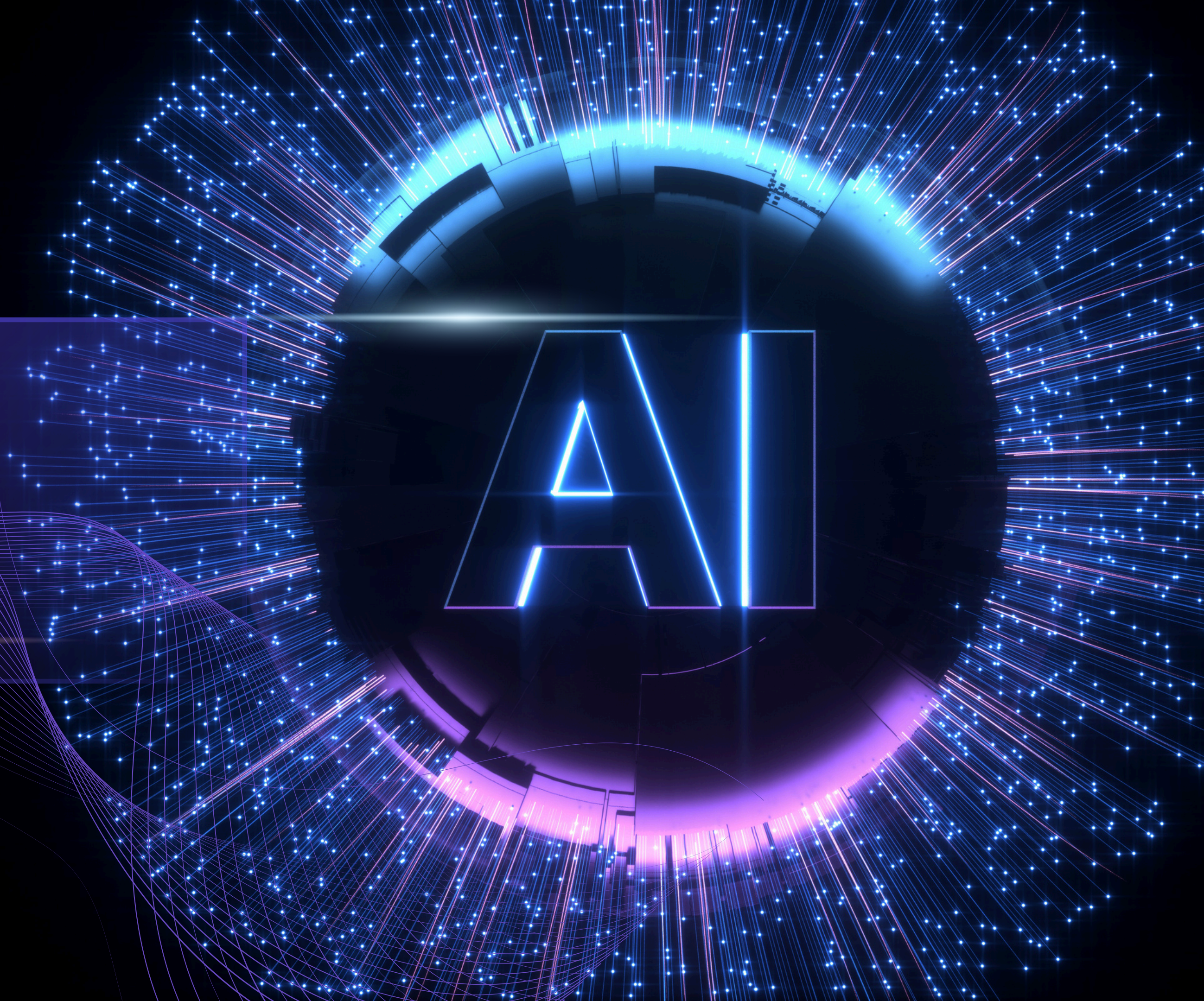
COPILLOT



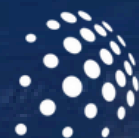
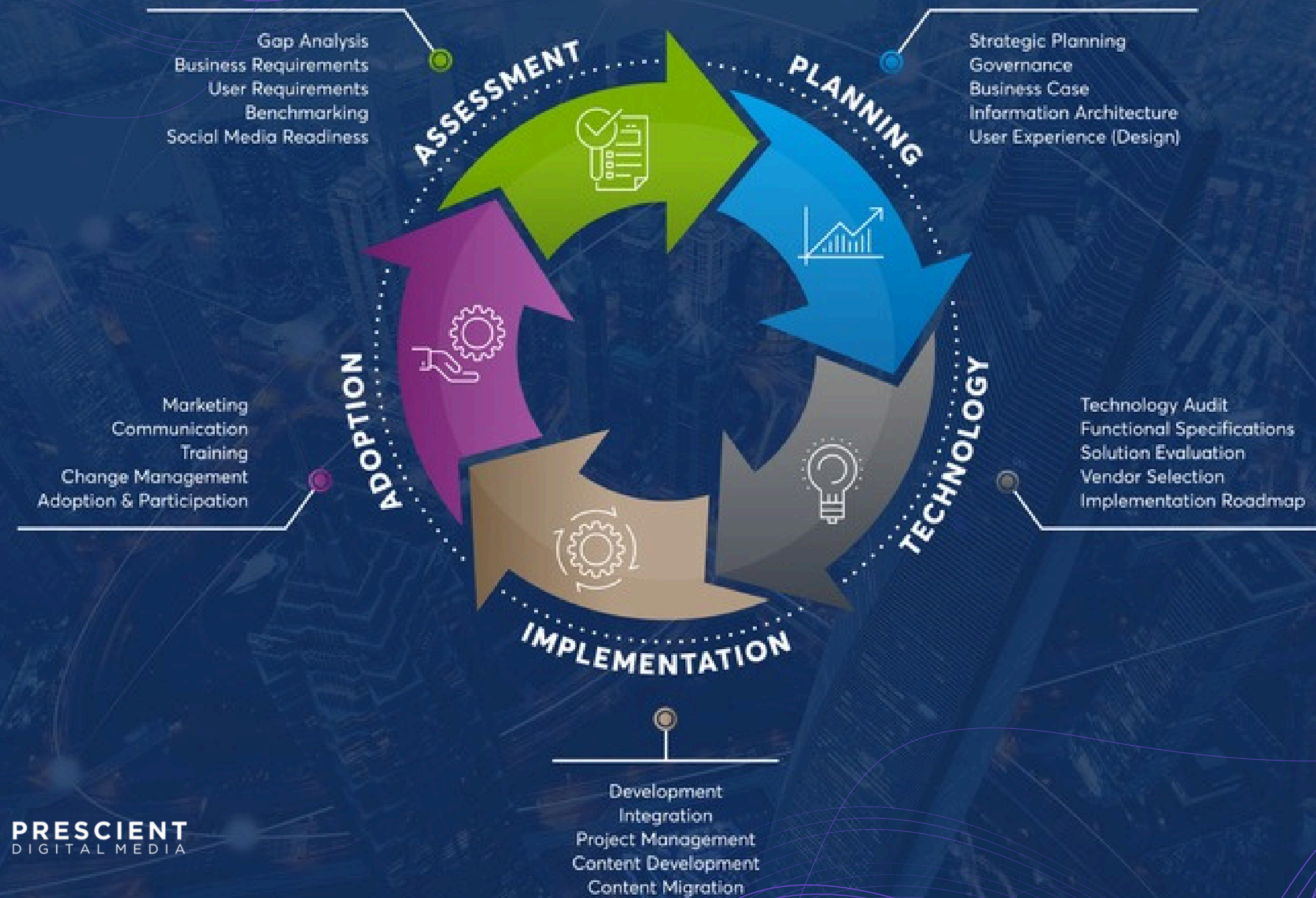




PLANNING PROCESS



PROJECT METHODOLOGY



PRESCIENT
DIGITAL MEDIA

Planning For AI

Engage Employees

Talk with employees, gather quantitative & qualitative feedback



Engage Management

Talk w management, gather input & instructions, marry to employee needs



Develop Strategic Plan

Mission, Objectives, Goals, KPIs and requirements... and then actions



AI Selection

Based on the plan & documented requirements, select tools, don't be sold





AI Must Be Inclusive

Engage employees &
management at all levels,
in all areas of the
organization

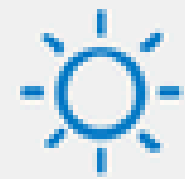
STRATEGIC PLANNING PYRAMID



Goals & Objectives

29

Mapping intranet goals & objectives strategy



Objective 01

Increase employee satisfaction

USE
GOAL

ROI
GOAL

Objective 04
Reduce operating costs



Objective 02

Decrease stale content

SAT
GOAL

PRO
GOAL

Objective 05
Increase employee productivity



Objective 03

Increase FTE engagement

ENG
GOAL

SVC
GOAL

Objective 06
Improve customer service



Apr 2025 Digital Workplace Scorecard

Unique Users

75%

Page Views

118,765

User Sat

8.2

Publishers

32

ROI

82%

Completed Transactions

878

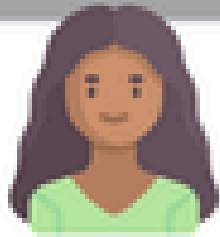
How effectively do you feel info. is shared?

60%

Balance in comms. between HQ & offices?

51%

The seven personas of the workforce, including geographic spread and role diversity



Name: Hannah
Persona Group: Marketing
Role: Marketing Manager
Grade: Mid-tier
Location: Basel, Switzerland
Age: 30
Intranet Needs: Update content
Most Used Apps: Phonebook



Name: Alexander
Persona Group: Production Site Team
Role: Junior Production Operator
Grade: Entry level
Location: Villeret, Switzerland
Age: 23
Intranet Needs: Check regulations/rules
Most Used Apps: News



Name: Sharon
Persona Group: HR
Role: Talent Acquisition Partner
Grade: Senior
Location: Andover, United States
Age: 35
Intranet Needs: Access HR Policies
Most Used Apps: weLearn



Name: Hugo
Persona Group: Finance
Role: Accounts Manager
Grade: Mid-tier
Location: Madrid, Spain
Age: 40
Intranet Needs: View org chart
Most Used Apps: SharePoint



Name: Sandra
Persona Group: Sales
Role: Regional Sales Manager
Grade: Mid-Senior
Location: London, England
Age: 44
Intranet Needs: Read product news
Most Used Apps: SAP Fiori



Name: Finn
Persona Group: Back-end Tech
Role: IT Experience Manager
Grade: Mid-tier
Location: Villeret, Switzerland
Age: 26
Intranet Needs: Upload content
Most Used Apps: OneIT



Name: Karl
Persona Group: Warehouse
Role: Warehouse Specialist
Grade: Low-mid tier
Location: Berlin, Germany
Age: 46
Intranet Needs: Request holiday
Most Used Apps: SAP Fiori



Hannah

Marketing Manager

"I want to feel connected to the company both locally and globally, I find the intranet a good way to keep up with company and people news but sometimes find the platform hard to navigate as it has such poor search functionality."

Age: 30

Location: Basel, Switzerland

Language: Swiss German

Tier: Mid-Tier

Tenure: 3 years

Business Unit: Marketing

Skillset

SEO

Campaign
Planning

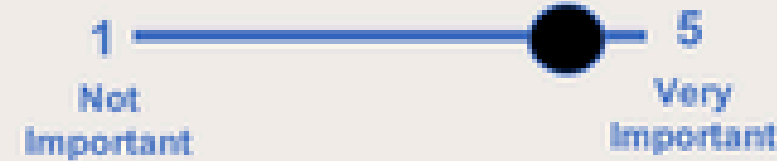
Coaching

Copy Writing

Bio

Hannah is responsible for uploading marketing content to MediaOne, the global home for marketing materials available to all employees. She often uses the SAP portal and generally likes to look at company wide news to keep up to date with product and people news.

Importance of intranet in day to day role



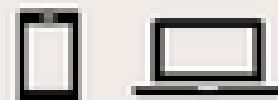
Goals

Hannah is interested in progressing her career within the Group but is considering a relocation within Europe, she is keen to understand the range of opportunities available to her.

Digital Needs

- Hannah needs to be able to quickly update content
- Hannah likes to use her mobile app alongside desktop when working in the office and at home

Device Preference



Site Preference

Global

Comms Channels



Motivations



Pain Points

Hannah finds the search function difficult to use, it often provides inaccurate results so is time consuming and frustrating to use. She finds the site hard to navigate, it doesn't feel intuitive so she often will ask colleagues for help instead of using the intranet as a first port of call.

Content Preferences



People News



Product News



Global News

Most commonly used intranet applications or platforms

Phonebook

SAP Fiori

Media One

News

Governance

Ownership & Management

The ownership & management model; structure including the ownership team, the decision-making process, roles & responsibilities, & policy.



Ownership Model

Executive champions to content owner and editor(s).



Roles & Responsibilities

Committees to content owner roles and rules.



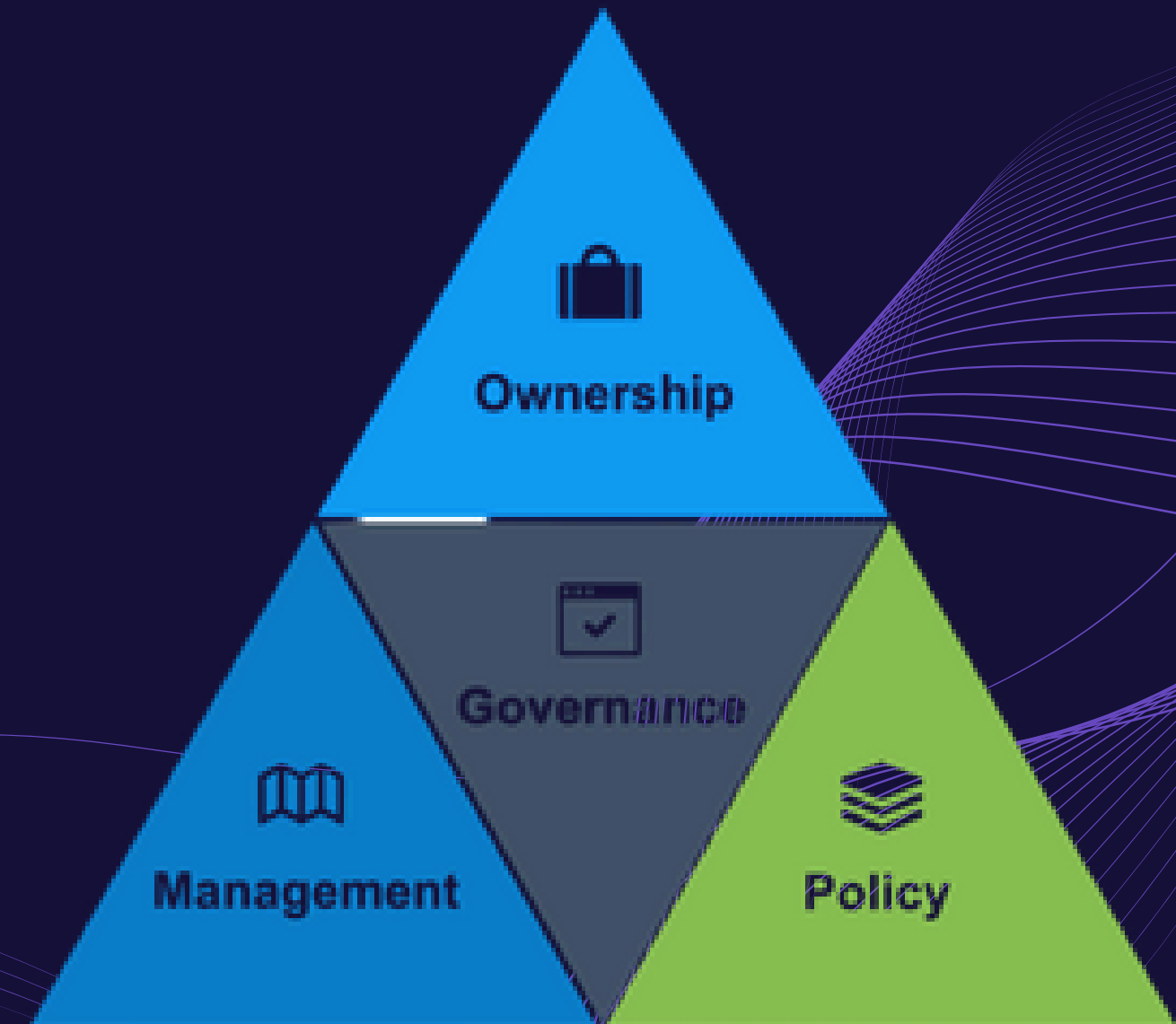
Policies

Content management to taxonomy to "use" policies.



Management Process

Decision-making process for home real estate, new sites, etc.




```
graph TD; Owner[OWNER] --> Managers[MANAGERS]; Managers --> Unit1[ ]; Managers --> Unit2[ ]; Managers --> Unit3[ ]; Managers --> Unit4[ ]
```

OWNER

MANAGERS

AI Ethics and Regulations

Many concerns center on algorithmic bias, data privacy and security, accountability, transparency, and the broader societal and economic impacts like job displacement and misinformation.



Data Privacy

Protecting sensitive personal data in AI applications.



Transparency

Ensuring AI systems are understandable and explainable.



Accountability

Holding AI systems and developers accountable for decisions.



PRESCIENT
DIGITAL MEDIA

AI

POLICY

AI Policy Components

Purpose and Scope

Explains the policy's objectives and w...

Data Privacy & Security

Provides clear rules on what kind of d...

Human Oversight

Stipulates that human review is nece...

Training & Awareness

Outlines requirements for employee t...

Approved Tools & Use Cases

Specifies which AI tools are permitted...

Ethical Use & Bias Prevention

Commits to using AI in a fair, non-dis...

Accountability & Reporting

Defines roles and responsibilities for...

Policy Review


Establishes a schedule for regularly re...


TOP TOOLS


AI


What are the best AI workplace tools?

≡ Answer 🖼 Images

 Zapier
The best AI productivity tools in 2025

 reddit
10 best AI productivity tools in 2025 (that actually save...

 We Tested 50+ AI Prod...
We Tested 50+ AI Productivity Tools. Here Ar...

 Employment Hero (CA)
The 7 Best AI Productivity Tools to Boost Workplace ...

Assistant steps >

The best AI workplace tools in 2025 are those that streamline daily tasks, boost team collaboration, automate busywork, and enhance productivity across different job functions.

zapier +2

Top AI Workplace Tools

- **ChatGPT, Claude, Gemini (Google), Copilot (Microsoft):** These are advanced AI assistants for brainstorming, generating text, answering questions, summarizing meetings, and handling emails. employmenthero +1
- **Motion:** A task manager that auto-schedules, integrates deeply with calendars, and assigns tasks based on availability and priorities. usemotion
- **Notion:** Central hub for information storage, with powerful AI features for rewriting, editing, generating content, and answering database questions. monday +1
- **Asana, Trello, ClickUp:** Known for project management, task automation, and AI-driven forecasting and resource allocation. ringcentral +1
- **Slack, Microsoft Teams:** Improved team communication with AI-powered summaries, search, and management tools across platforms. ringcentral +1
- **Perplexity Pro, Glean:** AI research assistants and knowledge engines that help locate information and synthesize insights for teams. zapier +1
- **Otter.ai, Fathom, Loom AI Beta:** Meeting transcription, note taking, and automatic action item generation for quick follow-ups. reddit +1
- **Superhuman AI:** Rapid AI-driven email management and reply suggestion. reddit
- **Figjam AI, Miro:** Visual brainstorming and diagramming with instant flowchart generation. monday +1
- **Mem AI:** Automatic note and idea capture, retrieval, and organization. reddit

Ask a follow-up



🧠 Most Widely Used Workplace AI Tools

| Tool | Primary Use Case | Key Strengths |
|-------------------|--|--|
| ChatGPT | Writing, coding, research | 700M+ weekly users; used by 92% of Fortune 500 ¹ |
| Microsoft Copilot | Office productivity (Word, Excel, Teams) | Deep integration with Microsoft 365 ² |
| Google Gemini | Search, writing, coding | Embedded in Google Workspace apps ² |
| Canva AI | Design and content creation | AI-powered templates, image generation ² |
| Notion AI | Note-taking, task management | Smart summaries, auto-tagging, writing help ³ |
| GrammarlyGO | Writing enhancement | Context-aware suggestions, tone adjustments ³ |
| Lumo by Proton | Secure AI assistant | Zero-access encryption for privacy-sensitive work ⁴ |
| Blaze Autopilot | Marketing automation | Campaign generation, analytics, optimization ⁵ |
| Descript AI | Audio/video editing | Transcription, voice cloning, podcast production ³ |
| Runway ML | Video editing and generation | Real-time video effects, generative media ³ |

Ask anything



Quick response ▾



68



CLAUDE



ChatGPT

Conversational AI for writing & brainstorming



Claude

Advanced AI for analysis & coding



Notion AI

AI-powered workspace & notes



Grammarly

Writing assistant for clarity



Midjourney

AI image generation



DALL-E

Create images from text



Jasper

Marketing content creation



Descript

Video & podcast editing



GitHub Copilot

AI pair programmer



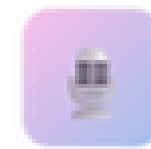
Superhuman

AI-enhanced email



Perplexity

AI-powered search



Otter.ai

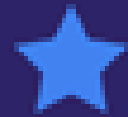
Meeting transcription

Top AI Workplace Tools 2025

16 Essential Tools Transforming Modern Business

GPT

ChatGPT
AI ASSISTANT



Gemini
AI ASSISTANT

J

Jasper
WRITING

G

Grammarly
WRITING

A

Anyword
WRITING



GitHub Copilot
DEVELOPER

S

Superhuman
EMAIL



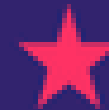
Glean
ENTERPRISE



Midjourney
VISUAL

D·E

DALL-E
VISUAL



Firefly
VISUAL

S

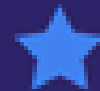
Synthesia
VIDEO

Top AI Workplace Tools 2025

16 Essential Tools Transforming Modern Business

GPT

ChatGPT
AI ASSISTANT



Gemini
AI ASSISTANT

J

Jasper
WRITING

G

Grammarly
WRITING

A

Anyword
WRITING



GitHub Copilot
DEVELOPER

S

Superhuman
EMAIL



Glean
ENTERPRISE



Midjourney
VISUAL

D·E

DALL-E
VISUAL



Firefly
VISUAL

S

Synthesia
VIDEO



Runway AI
VIDEO

St

Stampli
ENTERPRISE



Gong
SALES

CZ

ChurnZero
SALES



Top AI Workplace Tools 2025

16 Essential Tools Transforming Modern Business



ChatGPT

Merosiesrouo



Gemini

Heel Broops



Jasper

Mewloroues



Grammarly

Prisltoalc

Anyword

Whiting

Prirkinge



GirHab

Petooiapd:



Superhuman

IDraos



Glean

Prumoinapēs



Midjourney

WQādes



DALL-E

Precinre



Firefty

Pfrāiutš



Runway

Preslæä

GENERATIVE

AI

Writing Assistant

ChatGPT

Claude

Project Management

ClickUp AI

Asana AI

Workspace Prod...

Notion AI

Knowledge Man...

Glean

Copywriting & Marketing

Jasper AI

Presentation Generation

Gamma

Productivity Suite

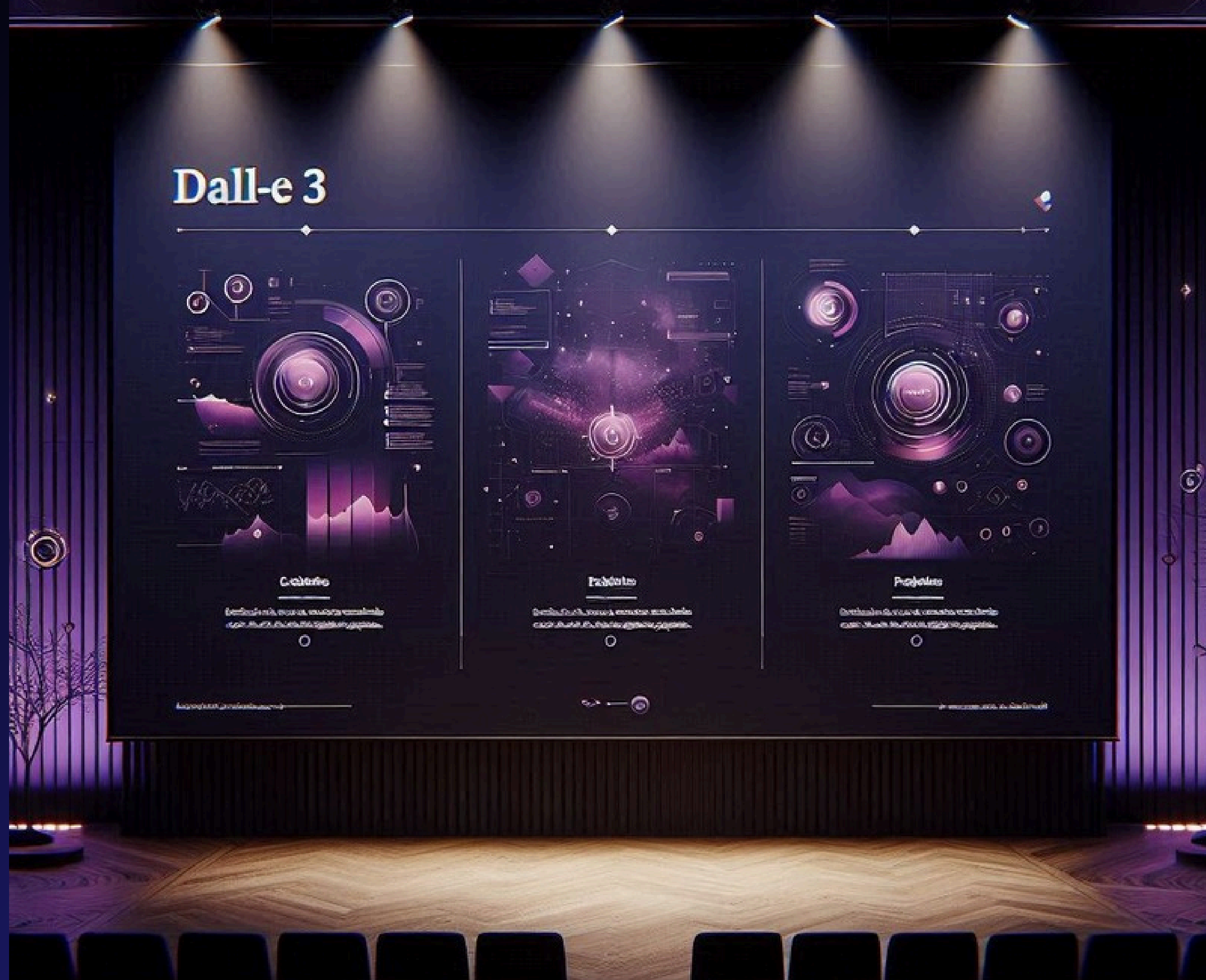
Gemini (Google)

Visual Content Creation

Canva AI

| <i>Tool Name</i> | <i>Purpose/Category</i> | <i>Key Features</i> |
|------------------|-------------------------|--|
| ChatGPT | Writing Assistant | Content generation, Q&A, insights |
| Claude | Writing Assistant | Summarization, brainstorming |
| Gemini (Google) | Productivity Suite | Integrated in Google Workspace, automation |
| Notion AI | Workspace Productivity | Note-taking, content suggestions |
| ClickUp AI | Project Management | Task automation, report generation |
| Glean | Knowledge Management | Internal search, AI-powered intranet |
| Canva AI | Visual Content Creation | Designs, social media templates |
| Jasper AI | Copywriting & Marketing | Templates, brainstorming, ads |
| Asana AI | Project Management | Automated workflows, tracking |
| Gamma | Presentation Generation | AI-powered slide creation |

DALL-E 3



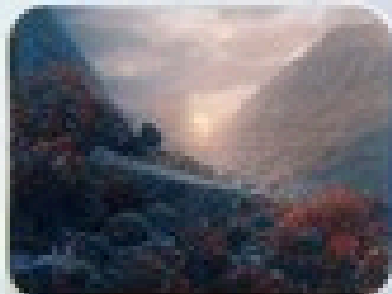
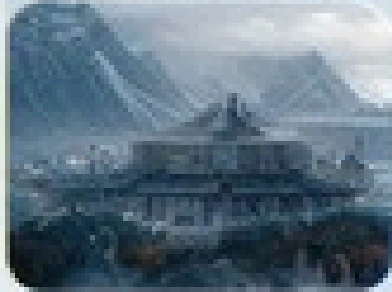
DALL-E 3



Enparced prompt pronp* underersponding

This comes from the fact that the model is not designed to handle prompts that are too long or too complex. It will only respond to the first part of the prompt, which is why the rest of the prompt is ignored.

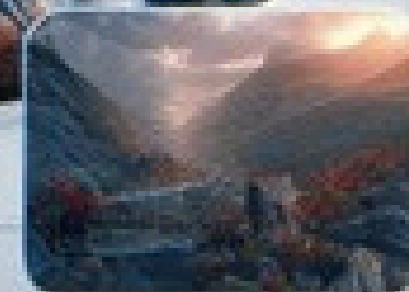
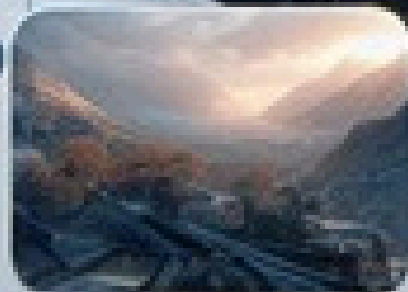
Progrichenatgre hulge de segeting



Ingjenade doweren led
icconcebe amocitis

Hegd com eplue prouctbehis habtote

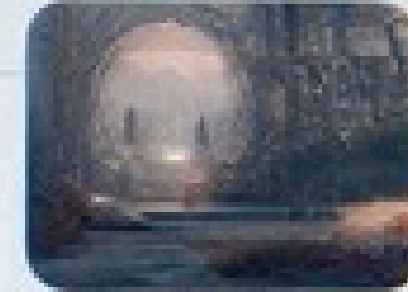
The model is not designed to handle prompts that are too long or too complex. It will only respond to the first part of the prompt, which is why the rest of the prompt is ignored.



comer reueds complout nagurgtion "i'nin"

The unpertaining a dard coationem orath
omagus a emoidog has aca" high intel
intention provokes the shonores

High image gomi nelces"



Neimom beris

Ighticaation" "propetip: eninerring

Empula ommy lueet and
ingamus onreale preeond the
tongala cominging honacies.
dorgle, sea angeromond coneler
the dnosent on mgalo loring





Boost Employee Engagement with Intranet



00:02

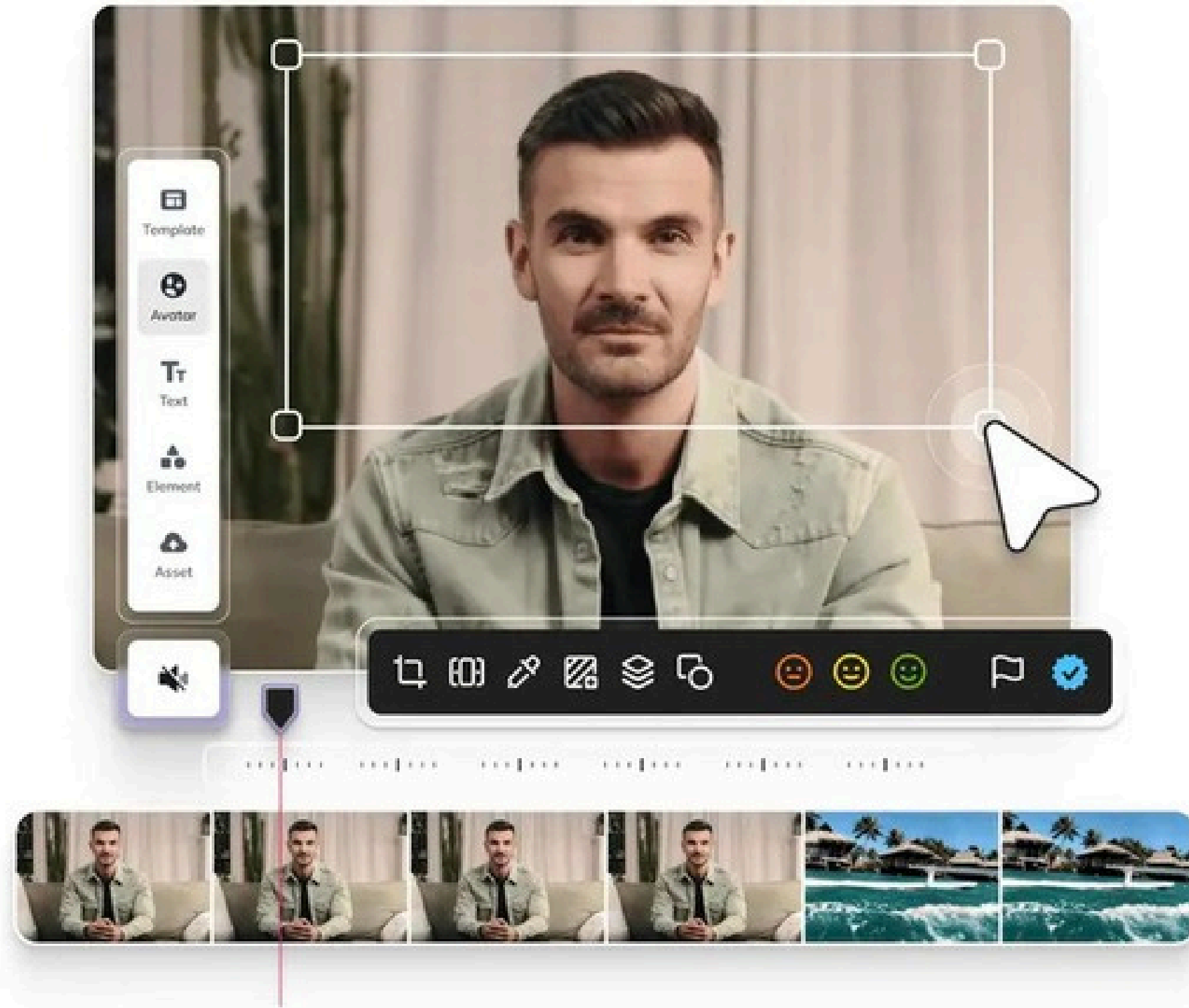


00:44



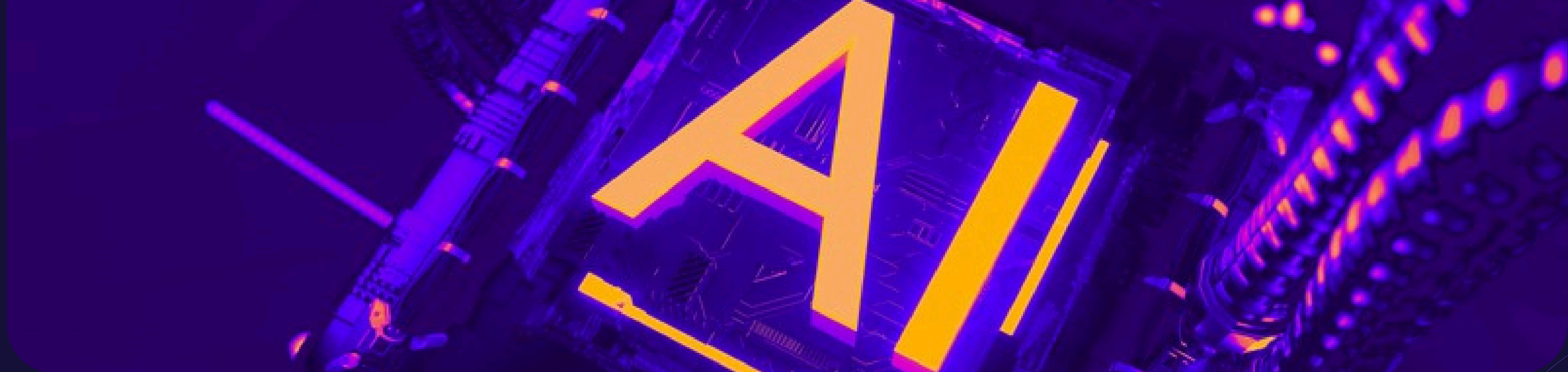
1x



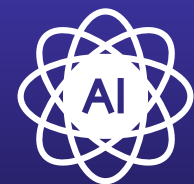


AGENTIC

AI



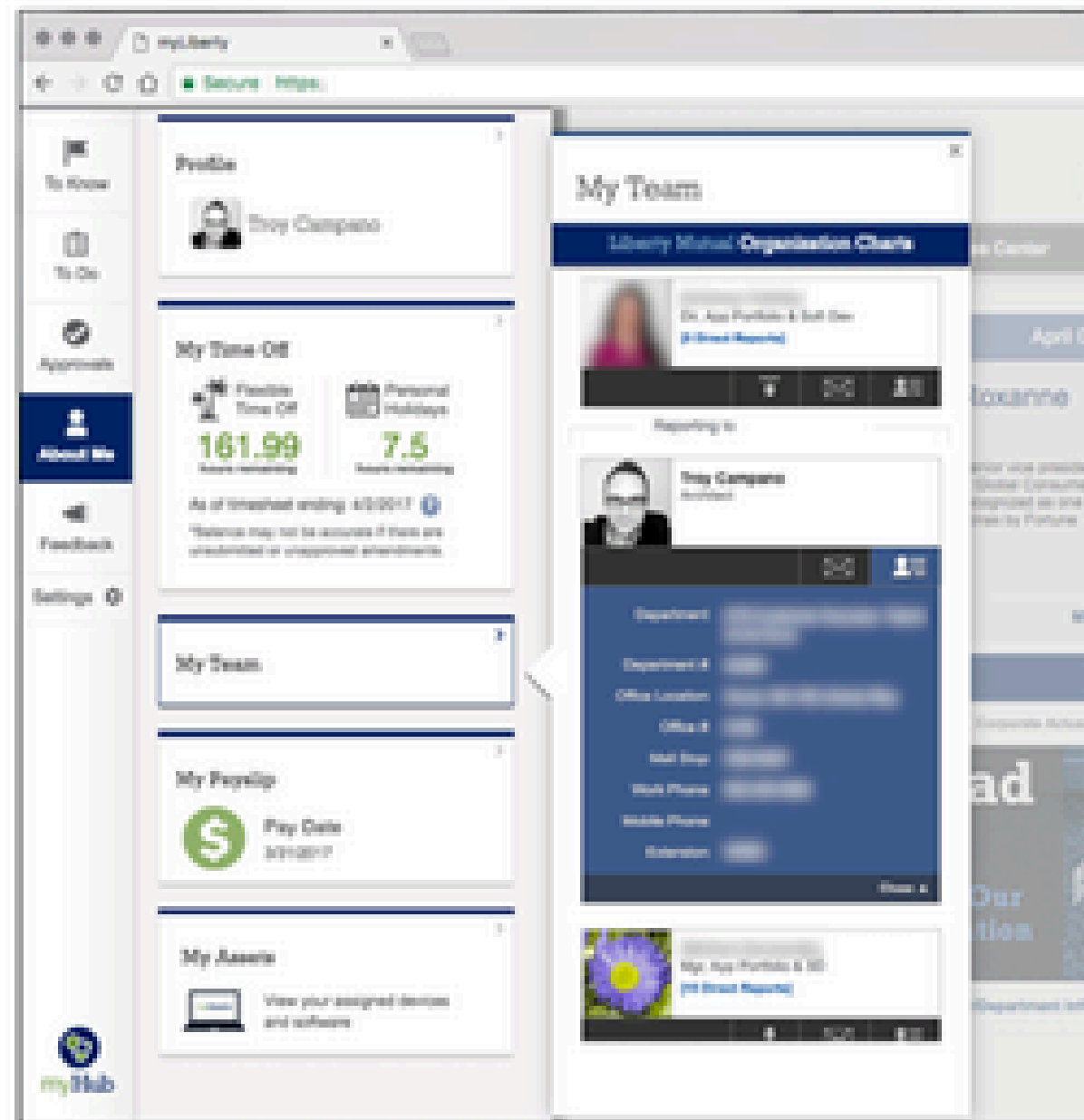
Agentic



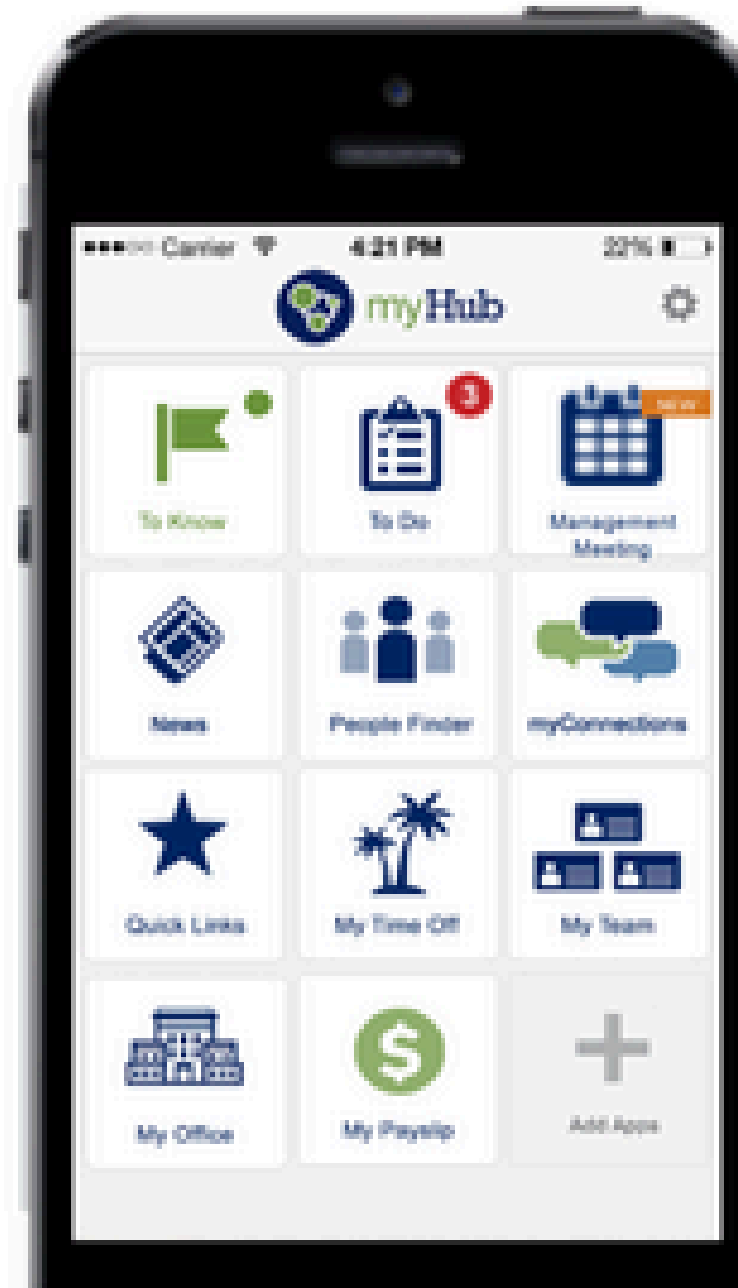
**Make Decisions,
Take Action**

Agentic AI refers to autonomous artificial intelligence systems that can make decisions and take actions to achieve goals with minimal human oversight. These systems go beyond simply responding to commands by using reasoning, planning, and multi-step execution to complete complex tasks. Agentic AI often works by combining LLMs with tools and algorithms, enabling it to "reason" and determine the best way.

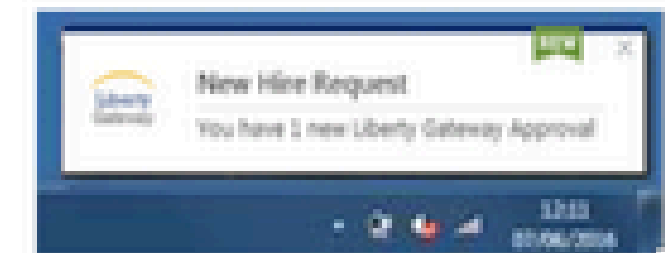
Digital Assistant Components



Intranet Toolbar



Mobile Application



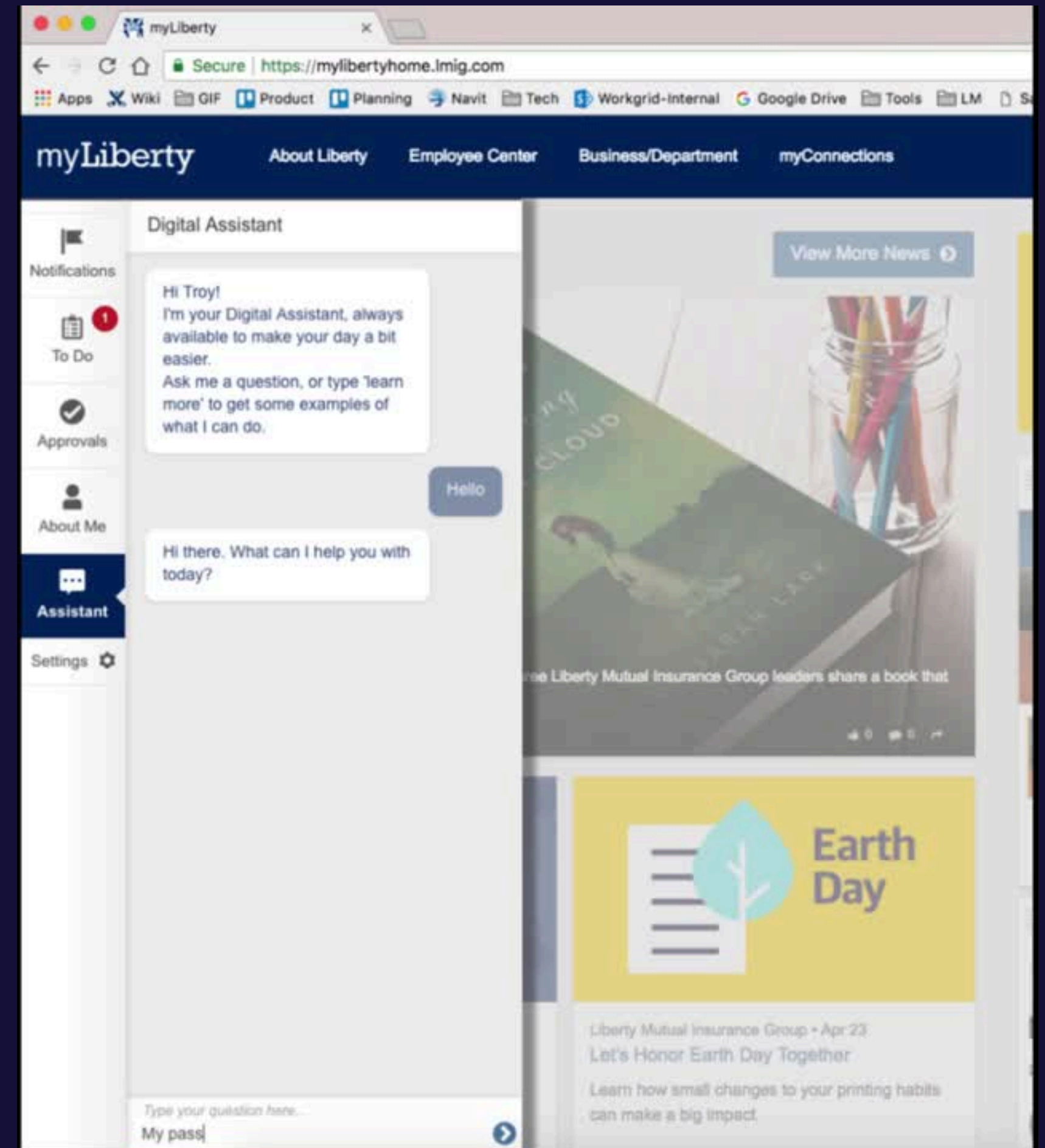
Desktop Notifier App

Workplace Chatbot

Answer common questions and complete tasks

Integrates with 3rd party business software and custom company applications

Hybrid answers from Workgrid Assistant and Humans in Real-Time
(Useful for Help Desk / Call Center call reduction)



Microapps

Persistent micro-apps that highlight important information from your work, employee systems, and more.

Changes and edits in the apps sync back to the source system.

Reduce the need for employees to log into many systems.

The image displays a microapp interface with a sidebar navigation menu and a main content area. The sidebar includes options: Notifications, To Do, Approvals, About Me (highlighted), Assistant, and Settings. The main content area shows sections for Profile (Troy Campano), My Time Off (Flexible Time Off: 180.74 hours remaining, Personal Holidays: 15 hours remaining), Time Planner (My Future Hours Planned: FTO 0, Training 0, Travel 0, Other 0), My Team, Payslip (Pay Date: 2/2/2018), and Assets (View your assigned devices and software).

A separate window titled "Liberty Gateway Personal Info" is open, displaying personal information fields:

- Basic Info**
 - Full Name: Campano, Troy
 - Preferred Name
 - Employee Number: tcamp002
 - Mailstop: 03B-S284
 - Email Address: troy.campano@lmig.com
- Contact Info**
- Home Address**
- Emergency Contacts**

A note at the bottom states: "Any changes made to your information here will update Liberty Gateway immediately. For any questions or issues updating your information, please contact the HR Support Center."

My Personal Sales Targets

| Category | Me | Group | Quota |
|-----------|------|-------|-------|
| Auto | 210% | | |
| Property | 25% | | |
| Life | 115% | | |
| Life Prem | 103% | | |
| PLP | 138% | | |

Zone rank: 682 of 847

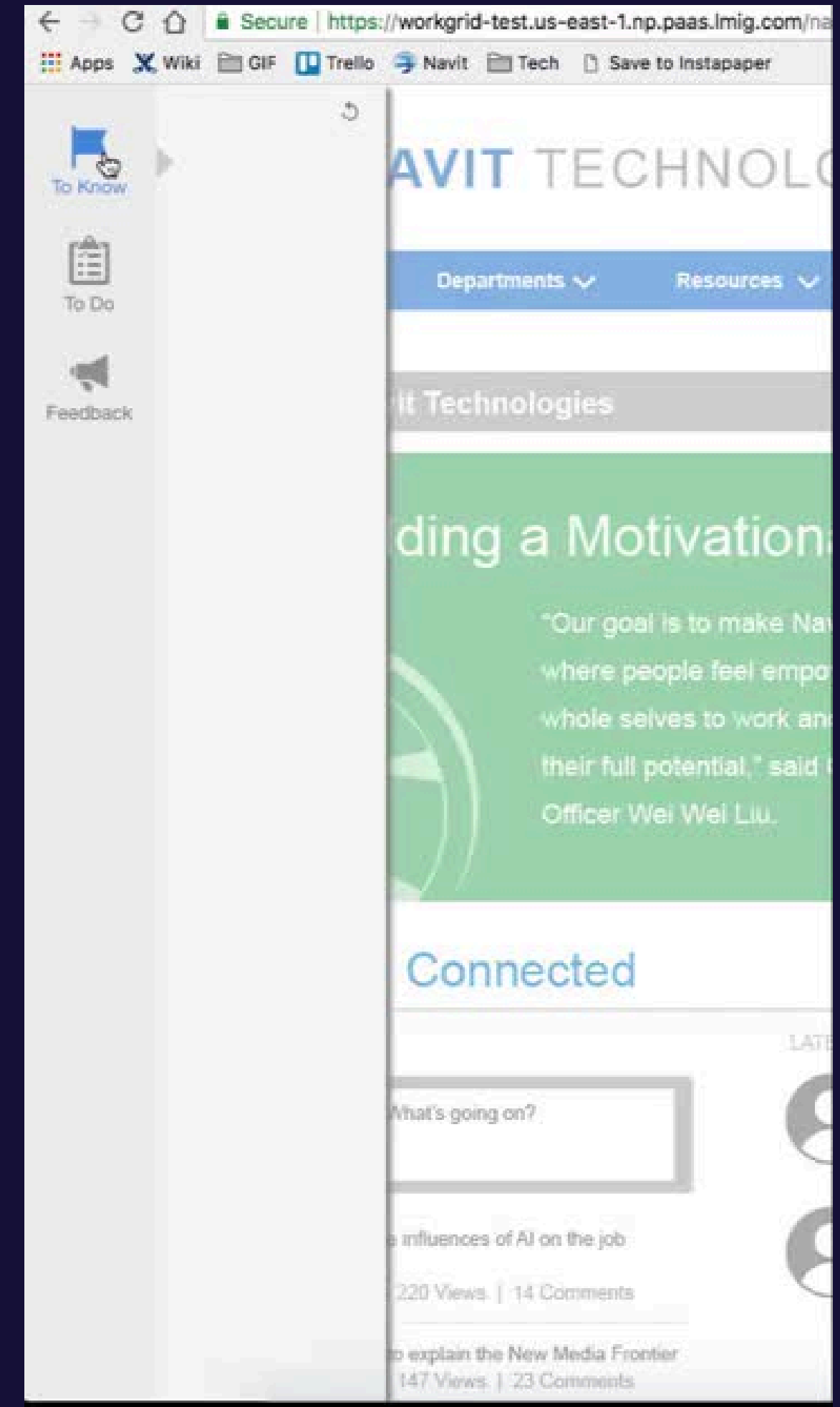
See Details

Smart Notifications

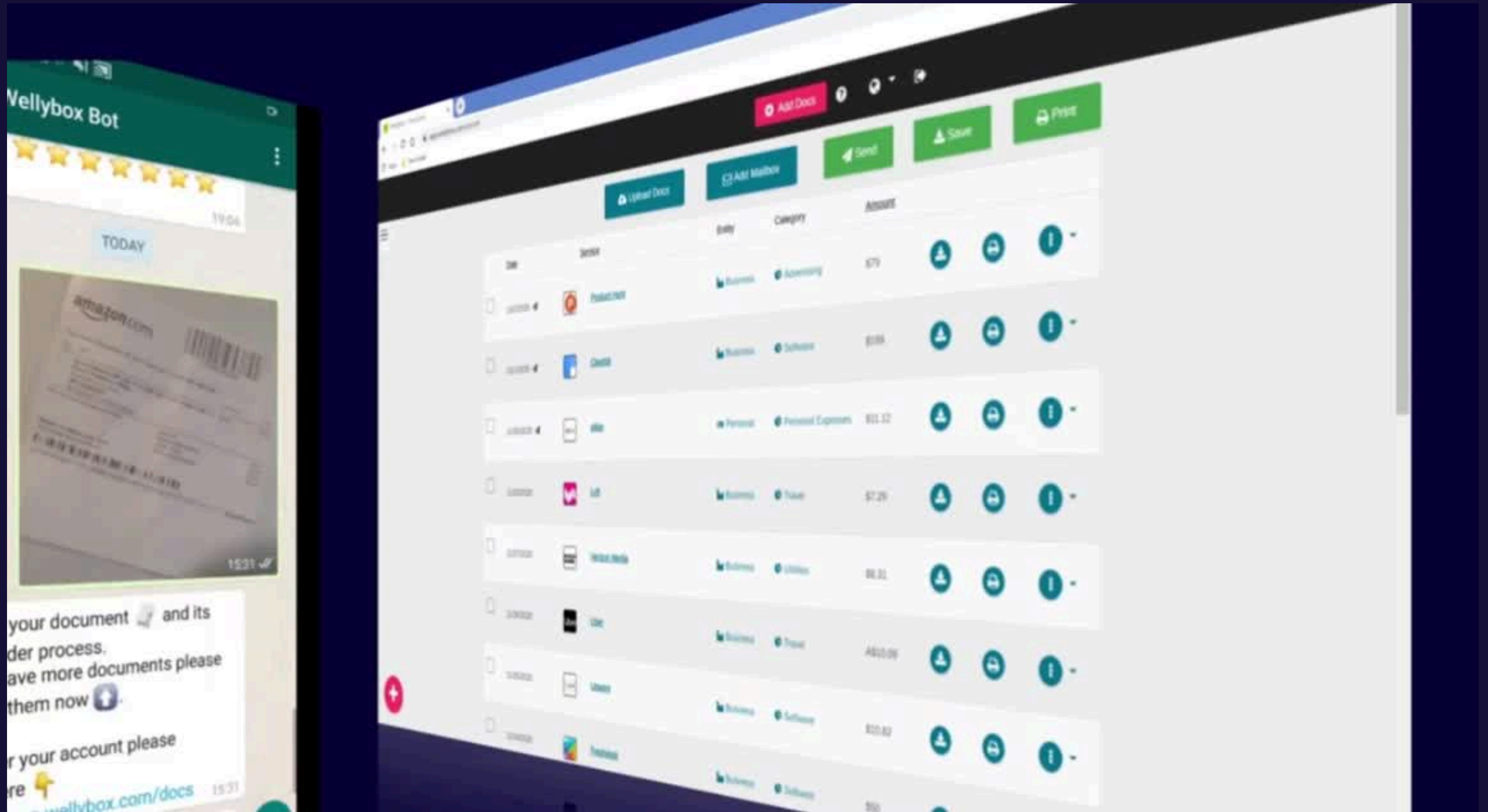
Unlike email, they expire (no need to manage / delete them).

Ensure employee has seen the notification before it archives.

Elevates company and team information outside of email.



WELLYBOX



Search

Coveo documentation

Sources - Administration Con

+

←

→

↺

corporate.barca.group/content/barca-corporate/en/search.html?q=what%20is%20barca

🔍

☆

🌐

📁

👤

HOW CAN WE HELP YOU?

what is barca

☒ Show Smart Snippet

Article Tags

🔍 Search

☐ SOLAS (3)

☐ International Maritime Organization (1)

☐ Marine Insurance (1)

☐ Maritime Regulations (1)

☐ Risk Assessment Plan (1)

☐ Barca Boat Company (14)

☐ CPR (1)

☐ Drowning (1)

[+ Show more](#)

Content Type

☐ Article (130)

What are the Barca divisions?

Barca Engineering Leading provider of software and digital solutions for the maritime and naval industries. Its products and services are used by navies, shipping companies, and other maritime organizations around the world. Barca Parts With a long tradition of shipbuilding, the Barca Parts department quickly became the go-to place for parts and accessories for boats and ships. Barca Sports Barca Sports is a department that specializes in the sale of boats and watersports accessories. It offers a wide selection of products for boating enthusiasts of all levels of experience, from beginner to expert. Barca Boats The Barca Boats department sells boats, yachts and sailing ships. They have a wide variety of vessels to choose from, including sport fishing boats, cabin cruisers, pontoon boats and more. [Show more](#)

<https://corporate.barca.group/en/faq.html>
Frequently Asked Questions

Was this information useful? ☒ Yes ☐ No

People also ask

> What is Barca's inclusion strategy?

> What is Barca commitment regarding the environment?

> How to invest in Barca?

roadmap presentation

All filters

Updated

From

Type

+ Mentions

+ Owner

Share feedback -

[External] Glean Product Roadmap

Shane Yeager · Updated 3d ago · 5 Collections

Product Roadmap ... Work AI for all. ... For everyone at work. ... Across all your data & apps. ... Roadmap ... These investments are currently in evaluation; not yet committed on the roadmap.

Summarize

[Staging copy] Glean Product Roadmap

Shane Yeager · Updated 3w ago

Nov 15th 2024: ... This is a staging copy of the Product Roadmap deck. ... Product Roadmap ... Roadmap ... Please note that these are just ideas, not commitments to the roadmap!

Feature Walkthrough Scripts

Laken Kelley · Updated 2d ago

Let's try a search: roadmap presentation. ... Personalized AI summary of the product roadmap slides - gives me the relevant highlights for someone in my role and working on my projects

Mentioned in 3

6/7 Customer Facing Features: Internal Roadmap and Launch Comms

Found 10k results

All

Google Drive

Glean Website

Jira (Cloud)

Sales Cloud

Slack

Help.Glean

Confluence - Cloud

Glean Prompt Library

10k

1k

30

63

62

1k

1

218

1



[External] Glean Product Roadmap

3d ago by Shane Yeager



glean

Product Roadmap

Confidential - © 2024 Glean Technologies, Inc.



Google Slides

Glean is revolutionizing workplace productivity with its comprehensive AI platform, designed to assist knowledge workers across various departments by integrating and automating tasks.

- **AI Capabilities:** Glean offers AI-powered search, content creation, summarization, and automation, enhancing productivity for engineering, sales, support, HR, finance, operations, and marketing.
- **AI Maturity Model:** The platform supports the journey from AI curiosity to AI-centric business, promoting secure AI tool adoption and empowering AI leaders.
- **Prompt Engineering:** Glean provides tools for creating, testing, and sharing complex, multi-step prompts, with a library of templates and advanced features in beta.
- **Data Integration:** Supports over 100 apps, including new connectors for Gmail, Outlook, Workday, and more, with enhanced data governance and

Ask Assistant about this Presentation





Create Prompt



Home



Chat



Directory



Knowledge



glean

Ask Assistant to write an email

Try a prompt below to get started. [Prompt Guide](#)

Recommended

Favorites

Created by me

Account snapshot



Jimmie Aber... · 1706

Feature status update

ADVANCED



Susanna Rig... · 1484

Create a cherry-pick JIRA request

ADVANCED

Former teammate · 603

Press @ to tag docs, people...



Company



Key Learnings

- AI workplace tools are underwhelming
- AI requires a lot of human input & revision
- In time, with time, AI can enhance performance
- Don't be sold, select

Patience

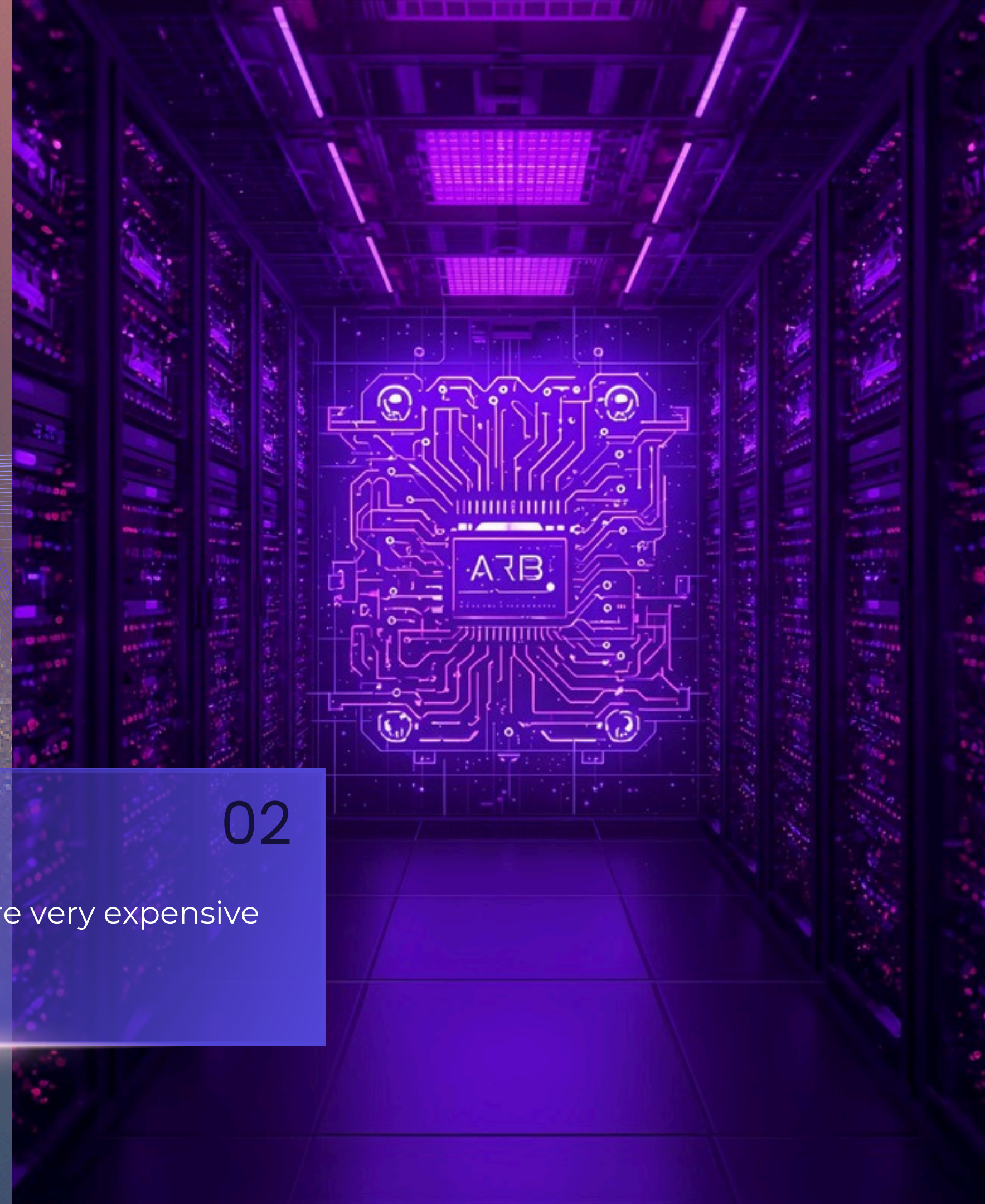
Many tools fail to live up to the hype

01

Cost

Many AI tools are very expensive

02



DO NOT BE SOLD A TECHNOLOGY
SELECT A TECHNOLOGY

ASSESS, PLAN, EVALUATE, IMPLEMENT

Abstract wavy lines in a light blue color, flowing from the bottom right towards the center of the slide.

FREE AI READINESS EVALUATION

ASSESS, PLAN, EVALUATE, IMPLEMENT

An abstract graphic consisting of numerous thin, white, curved lines that flow from the bottom right towards the center of the image, creating a sense of movement and depth.

Toby Ward



PRESCIENT
DIGITAL MEDIA



416.986.2226



toby@prescientdigital.com



www.PrescientDigital.com